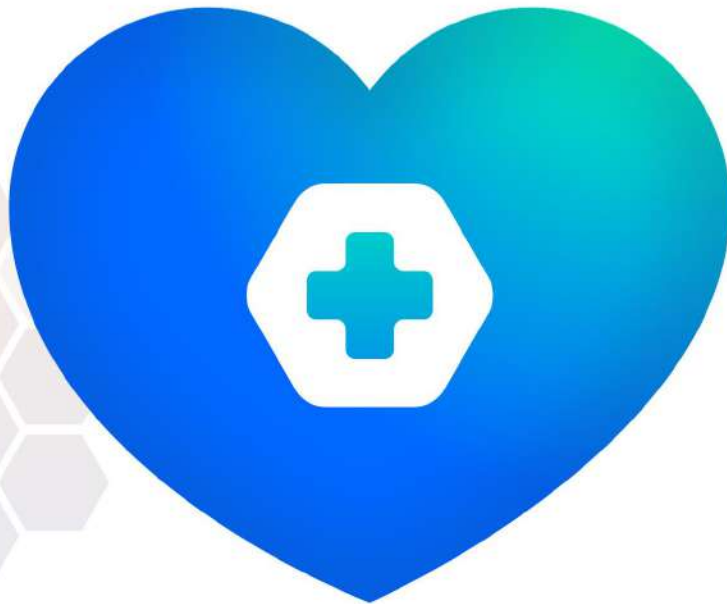




**WE**  
**TAKE CARE YOUR**  
**HEALTH**



**“ We Believe the Heart of Healthcare is  
Service to *Others.* ”**

**Call 76518 31700**



# ATTENDANT CARE AT HOME-PRICE LIST

S.NO.	DESCREPTION	DURATION	CHARGES	FOR 7 DAYS	FOR 15 DAYS	FOR 30 DAYS	FOR 3month
	Discount	----	----	----	7% DISC.	10% DISC.	15% DISC.
1	ATTENDANT STAFF Male / Female	12 Hour	900 /- Per day	6300 /-	13500/-	27000/-	81000/-
*	You Save Money	----	----		-945/-	-2700/-	-12150 /-
*	Net Amount	----	----		12555/-	24300/-	68850/-

S.NO.	DESCREPTION	DURATION	CHARGES	FOR 7 DAYS	FOR 15 DAYS	FOR 30 DAYS	FOR 3month
	Discount	----	----	----	7% DISC.	10% DISC.	15% DISC.
2	NURSING STAFF Male / Female	24 Hour	1400/- Per day	9800/-	21000/-	42000/-	126000/-
*	You Save Money	----	----		-1470/-	-4200/-	-18900/-
*	Net Amount	----	----		19530/-	37800/-	107100/-

- 1 Giving Medicines on time.
- 2 Fixing a diet plan
- 3 Caring and Dressing wounds
- 4 Monitor of vital signs
- 5 Intravenous Medication and IV fluids management
- 6 Nebulisation
- 7 Ryles Tube Insertion
- 8 Catheterization
- 9 Connulations/Transfusion Antibiotics
- 10 Personal Hygiene / Oral Care / Sponging / Cleaning
- 11 Tracheotomy Suction
- 12 PEG Tube Feed / Feeding
- 13 Colostomy Care / Bladders wash / Suture removal
- 14 Enema Administration
- 15 Exercise / Mobility / Suture removal
- 16 Tracheotomy Care / Urine Catheter Care

# NURSING CARE AT HOME-PRICE LIST

S.NO.	DESCREPTION	DURATION	CHARGES	FOR 7 DAYS	FOR 15 DAYS	FOR 30 DAYS	FOR 3month
	Discount	----	----	----	7% DISC.	10% DISC.	15% DISC.
1	NURSING STAFF Male /Female	12 Hours	1800/- Per day	12600/-	27000/-	54000/-	162000/-
*	You Save Money	----	----		-1890/-	-5400/-	-24300/-
*	Net Amount	----	----		25110/-	48600/-	137700/-

S.NO.	DESCREPTION	DURATION	CHARGES	FOR 7 DAYS	FOR 15 DAYS	FOR 30 DAYS	FOR 3month
	Discount	----	----	----	7% DISC.	10% DISC.	15% DISC.
2	ATTENDANT STAFF Male/ Female	24 Hour	2500/- Per day	17500/-	37500/-	75000/-	225000/-
*	You Save Money	----	----		-2625/-	-7500/-	-33750/-
*	Net Amount	----	----		34875/-	67500/-	191250/-

- 1 Feeding
- 2 Bathroom Assistance / Maintaining Hygiene
- 3 Maintaining Hygiene
- 4 Mobility / Helping in Exercise
- 5 Sponging / Cleaning
- 6 Giving medicines on time
- 7 Fixing a diet plan
- 8 Nebulisation
- 9 B.P. Check / Sugar Check
- 10 Temperature Check
- 11 Oral Care / Personal Hygiene
- 12 SIFTING BED AND WHEELCHAIR
- 13 Urine Catheter Care
- 14 Enema Administration

If you pay 1 month rent in advance then you will get 5% discount

3 month rent in advance then you will get 20% discount

6 month rent in advance then you will get 30% discount.

Note: This Amount is not refundable in any condition

# SEMI NURSE CARE AT HOME-PRICE LIST

S.NO.	DESCREPTION	DURATION	CHARGES	FOR 7 DAYS	FOR 15 DAYS	FOR 30 DAYS	FOR 3month
	Discount	----	----	----	7% DISC.	10% DISC.	15% DISC.
1	NURSING STAFF Male / Female	12 Housr	1200/- Per day	8400/-	18000/-	36000/-	108000/-
*	You Save Money	----	----		-1260/-	-3600/-	-16200/-
*	Net Amount	----	----		16740/-	32400/-	91800/-

S.NO.	DESCREPTION	DURATION	CHARGES	FOR 7 DAYS	FOR 15 DAYS	FOR 30 DAYS	FOR 3month
	Discount	----	----	----	7% DISC.	10% DISC.	15% DISC.
2	NURSING STAFF Male / Female	24 Housr	1800/- Per day	12600/-	27000/-	54000/-	162000/-
*	You Save Money	----	----		-1890/-	-5400/-	-24300/-
*	Net Amount	----	----		25110/-	48600/-	137700/-

- 1 Giving Medicines on time.
- 2 Fixing a diet plan
- 3 Caring and Dressing wounds
- 4 Monitor of vital signs
- 5 Intravenous Medication and IV fluids management
- 6 Nebulisation
- 7 Ryles Tube Insertion
- 8 Catheterization
- 9 Connulations/Transfusion Antibiotics
- 10 Personal Hygiene / Oral Care / Sponging / Cleaning
- 11 Tracheotomy Suction
- 12 PEG Tube Feed / Feeding
- 13 Colostomy Care / Bladders wash / Suture removal
- 14 Enema Administration
- 15 Exercise / Mobility / Suture removal
- 16 Tracheotomy Care / Urine Catheter Care

# MEDICAL EQUIPMENTS ON RENT OR SALE

Sr. N.	Description	Rent For 7 Days	Rent For 15 Days	Rent For 30 Days	Security Cheque / Cash
01	OXYGEN CONCENTRATOR 5 LPM	3000	4000	5000	50 K
02	OXYGEN CONCENTRATOR 10 LPM	7500	8500	10000	80 K
03	OXYGEN CONCENTRATOR 8L	5000	7000	8000	70 K
04	OXYGEN CYLINDER 10 LPM	2000	2500	3000	10 K
05	BIPAP MACHINE RESMED	3500	5000	6000	30 K
06	CPAP MACHINE RESMED	3000	4000	5500	30 K
07	VENTILATOR TRILOGY - 100	22000	26000	30000	3 Lakh
08	VENTILATOR RESMED	.....	25000	36000	4 Lakh
09	VENTILATOR VIVO 55	18000	25000	33000	4 Lakh
10.	VENTILATOR LTV 950	.....	25000	36000	4 Lakh
11	VPAP / ST RESMED	3500	4500	6000	70 K
12	PATIENT ICU MONITOR 5 PARA	3500	4500	6000	40 K
13	PATIENT ICU MONITOR 3 PARA	3000	4000	5000	40 K
14	DVT PUMP	3000	4000	5000	40 K
15	1 JAR SUCTION MACHINE	1500	2500	3500	10 K
16	2 JAR SUCTION MACHINE	2000	3000	4000	10 K
17	FOOT SUCTION MACHINE	800	1500	1800	10 K
18	NORMAL WHEELCHAIR FOLDABLE	1500	2000	2500	10 K
19	RECLINER WHEELCHAIR FOLDABLE	2500	3500	5000	25 K
20	COMMODOE CHAIR FOLDABLE	2000	2500	3000	10 K
21	PORTABLE NORMAL WHEELCHAIR FOLDABLE	1500	2000	3000	10 K
22	IV STAND	1000	1500	2000	5 K
23	AIR MATTRESS	SALE	.....	.....	.....
24	COMMODOE WHEELCHAIR FOLDABLE	2500	3500	5000	20 K
25	RECLINER BED ELECTRIC	3000	4500	5000	20 K
26	ONE FUNCTION ELECTRIC BED	2500	3500	4000	20 K
27	TWO FUNCTION ELECTRIC BED	3000	4000	5000	30 K
28	THREE FUNCTION ELECTRIC BED	3500	5000	6000	40 K
29	5 FUNCTION ELECTRIC BED	6000	8000	14000	80 K
30	1 FUNCTION PATIENT BED MANUAL	2000	2500	3500	15 K
31	2 FUNCTION PATIENT BED MANUAL	2500	3500	4000	20 K
32	PULSE OXIMETER	SALE	.....	.....	.....
33	DIGITAL BP METER	SALE	.....	.....	.....
34	NEBULIZER MACHINE	SALE	.....	.....	.....
35	WALKER FOLDABLE	SALE	.....	.....	.....
36	CHEST VIBRATOR MACHINE	1000	.....	2000	10 K

If you pay 1 month rent in advance then you will get 5% discount

3 month rent in advance then you will get 20% discount

6 month rent in advance then you will get 30% discount.

Note: This Amount is not refundable in any condition



# ON CALL SERVICES AT HOMES

S.No.	Description	Charges in Noida	Charges in Delhi / NCR
1	Urine Catheter Silicone change any Size Full Package	1300-1500	1500-1700
2	Urine Catheter Normal Change any size Full Package	1200-1400	1500-1600
3	Ryles Tube Normal change any size Full Package	1300-1500	1500-1700
4	Ryles Tube change silicon any size Full Package	1500-1700	1700-1800
5	Tracheostomy tube change any size Full Package	2200-2500	2500-2800
6	IV Fluid Transfusion	700-1000	1200-1500
7	Antibiotics Inj. Transfusion	400-800	800-900
8	Inj. IV/IM / Sc insert	300-800	800-900
9	Cannulation / IV Cannula	500-800	1000-1200
10	Wound Dressing / Bed Sore	400-1000	800-1500
11	Picc Line Dressing	400-1000	800-1500
12	Oral Suction	700-1000	1200-1500

If you pay 1 month rent in advance then you will get 5% discount

3 month rent in advance then you will get 20% discount

6 month rent in advance then you will get 30% discount.

Note: This Amount is not refundable in any condition



# Thank You

Call for  
**QUERIES / SERVICES**

**76518 31700**

✉ [info@anzamapatientcare.com](mailto:info@anzamapatientcare.com)

🌐 [www.anzamapatientcare.com](http://www.anzamapatientcare.com)